

SRS-M Series Mobile Mast



Summary ~ ITS SRS-M Series ~ Multi-Terrain Mobile Mast System

- A multi-terrain drawbar trailer with a standard 15,000lb (6,803kg) capacity GVWR ~ to ±6,000lbs (2,721kg) of available deck top payload; tandem 7,000lb (3,175kg) capacity each, heavy-duty axles, telescopic outrigger stabilizing system, 12V/24V arctic-desert wiring with LED lighting package, all-wheel electric brakes or *optional hydraulic/surge* upgraded with an adjustable height surge brake actuator; optional integrated tie-down and lifting provisions designed to MIL-STD 209K; “D” ring-style outrigger lashing rings, leveling devices, storage containment; impact and weather resistant black polyuria trailer coating
- Heavy-duty and super heavy-duty *locking telescopic pneumatic mast* elevations to ±100’0” (30m) AGL, self-supporting and guy capable, rugged construction, high-strength heat treated aluminum tubes & collars, low-friction synthetic bearings, shock absorbing bumpers; includes mast base plate and external brackets; *mast payload capacity to 1,200lbs (544kg) at 80’0” (24.4m) and to 450lbs (204kg) at 100’0” AGL*
- Heavy-duty, 120/220VAC/50-60Hz *limit switch controlled electric winch or tandem hydraulic cylinder tilt assembly*, integrated safety features; trailer-level NEMA 4 locking enclosure houses mast operating controls – tilt and telescoping functions; onboard compressor system with convenient external power switch

The **SRS-M** model designates a standard 15,000lb (6,803kg) capacity Gross Vehicle Weight Rating (GVWR), heavy-duty multi-terrain trailer and mast system designed to transport up to 6,000lbs (2,721kg). As designed, the trailer’s skeletal frame is engineered with a minimum factor of safety of 2:1, with 4:1 in critical load areas. A multi-section heavy-duty, super heavy-duty or ultra-heavy-duty pneumatic locking mast is designed to transport horizontally over the trailer’s forward platform, automatically tilt by means of an HD electric cable winch or tandem hydraulic cylinder assembly and extend to its full height utilizing an onboard compressor. The **SRS-M Series** is capable of being deployed, elevated to its full-extended height and secured by individual mast-section locks by one person in under 30 minutes.

ITS SRS-M ~ Drawbar Trailer Specifications

- GVWR 15,000lb (6,803kg) Capacity; GAWR to 14,000lb (6,349kg)
- Dual 7,000lb (3,175kg) Axles; to 14,000lb (6,349kg) Capacity Suspension
- Transport Length ±24’0” (7.3m) to ±30’0” (9.1m); Height to ±8’3” (2.53m)
- Trailer Length ±23’6” (7.2m); Width 8’0” (2.44m); Deck Ht ±33” (84cm)
- Customer Equipment Area – ±8’0” (2.4m) x 8’0” (2.4m) to 1.8mH
- Solid Steel Construction – Min. 50 ksi Yield Strength
- C8.7 @ 11.5 Steel Main Beams; C6 @ 8.2 Perimeter Steel
- Weight without Customer or ITS-Installed Accessories to 8,000lbs (3,628kg)
- Customer Payload Transport Capacity to 6,000lbs (2,721kg)
- 1/8” (.32cm) Steel Plate Trailer Decks, Welded Construction–Poly Coated
- Four (4) HD Telescoping Outriggers; 12,000lb (5,442kg) Capacity Jacks
- *Electric or Surge Brakes*; 16” (41cm) or 17.5” (44.5cm) Tires
- Full Sized Spare with 16k 8 hole Disc or HD Wheels
- 12,000lb (5,442kg) Static Load, Adjustable Trailer Jack
- Deck-over-Axle Configuration; Overslung Suspension
- 12V/24V Arctic/Desert Wiring & Lighting; Lashing Rings
- Emergency Break-away Device; LED Lighting Package
- 2-5/16” (5.9cm) Coupler or Pintle Eye; P-70 Chains & Hooks
- 7 or 12-Pin Vehicle Connector, Operations/Maintenance Manual
- DOT Safety Decals; Reflectors; Multiple Trailer Levels
- Optional MIL-STD 209K Designed Tie-Down/Lift Provisions
- Black Painted with Impact/Weather Resistant Polyuria Coating

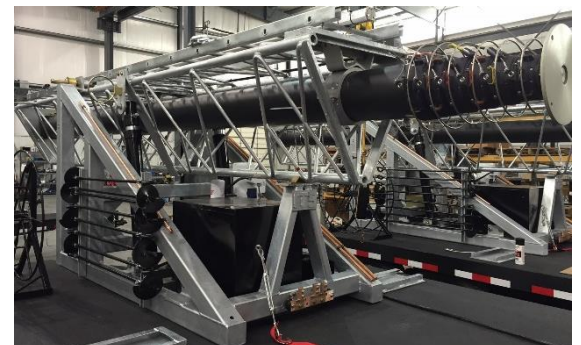
Pneumatic Mast Selection ~ Will-Burt Models to 100’0” (30m)

The primary benefits and features of the Will-Burt pneumatic mast includes:

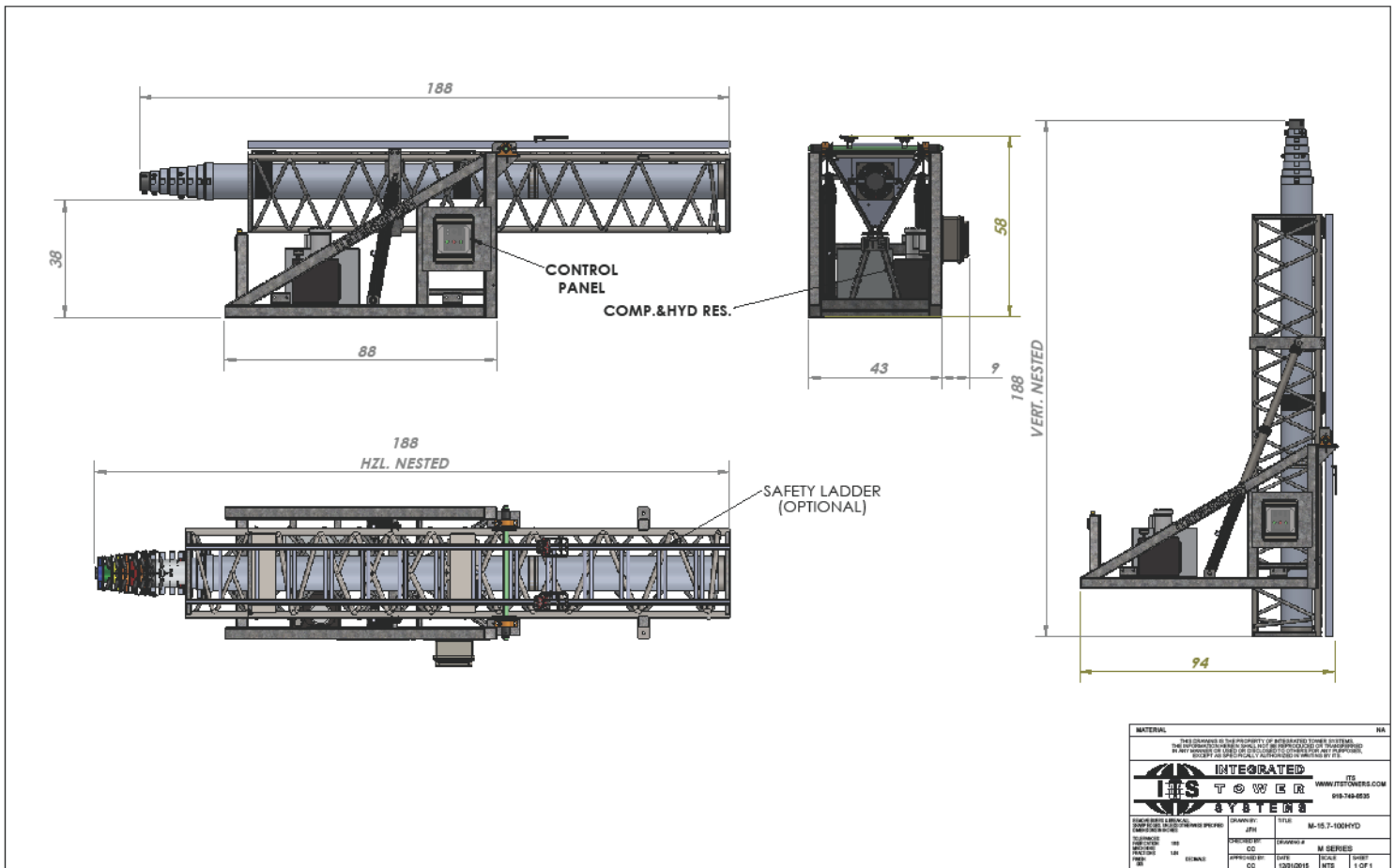
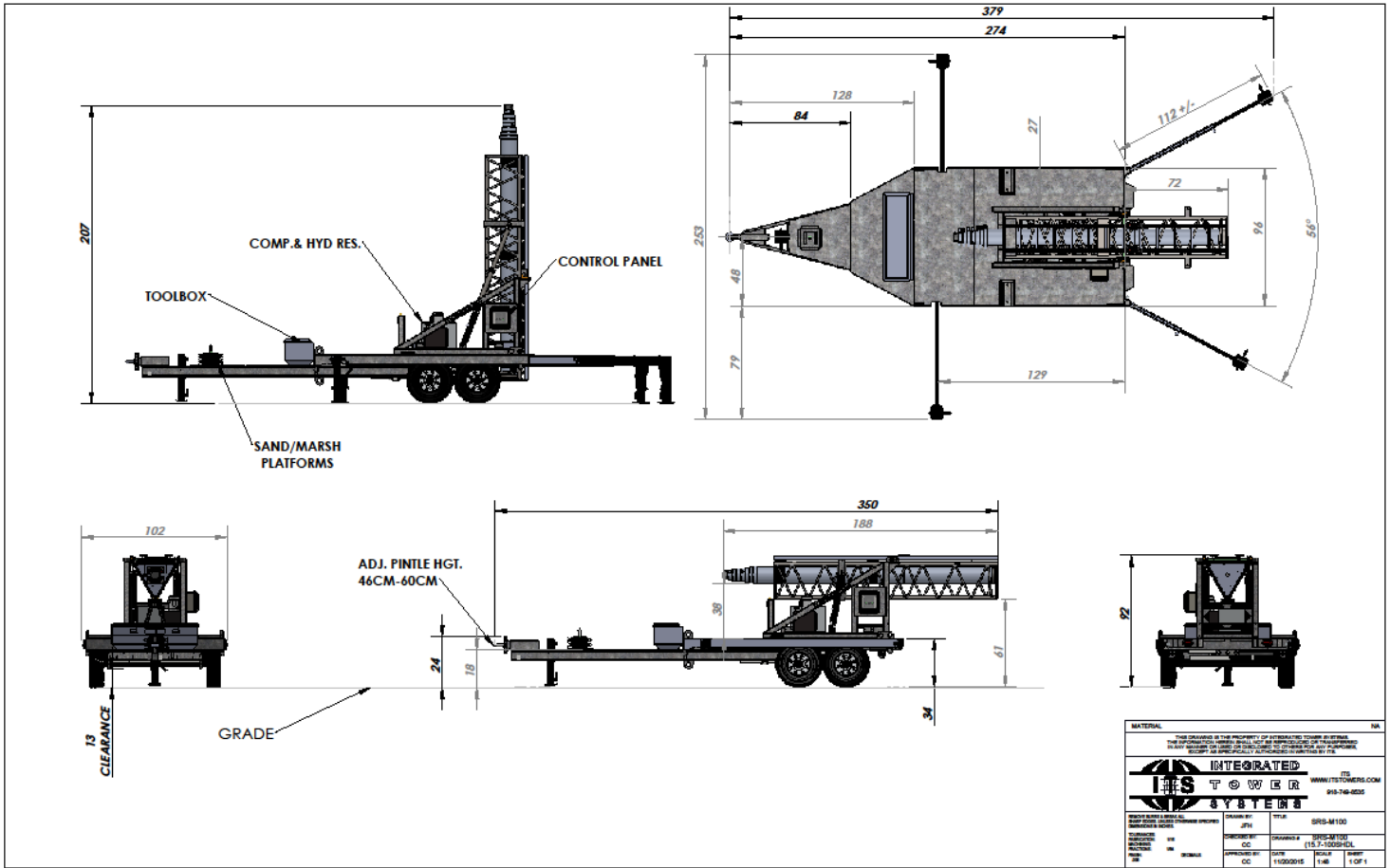
- » Locking collars allow the mast to remain extended indefinitely without air pressure
- » Rugged construction of high strength heat-treated aluminum tubes and collars with low friction synthetic bearings
- » Two full-length external keys on sections; collars have matching keyways that maintain directional azimuth
- » The bumpers are designed to reduce shock on extension and retraction
- » All exterior aluminum surfaces are anodized & sealed for long life; fasteners are plated steel for corrosion resistance
- » Payload capacity for select masts: to 1,200lbs (544kg) at 80’0” (24.4m) and 450lbs (204kg) at 100’0” (30m)
- » ITS secures the pneumatic mast within a heavy-duty lattice steel exoskeleton (“truss”) that protects the mast during the tilt function and offers added strength and stability to the extended mast structure
- » The truss-enclosed mast is secured to a square tube steel support structure that provides maximum protection and minimal deflection/vibration during primary and multi-terrain transport as well as during mast operation

REPRESENTATIVE SRS-M SERIES MOBILE MAST

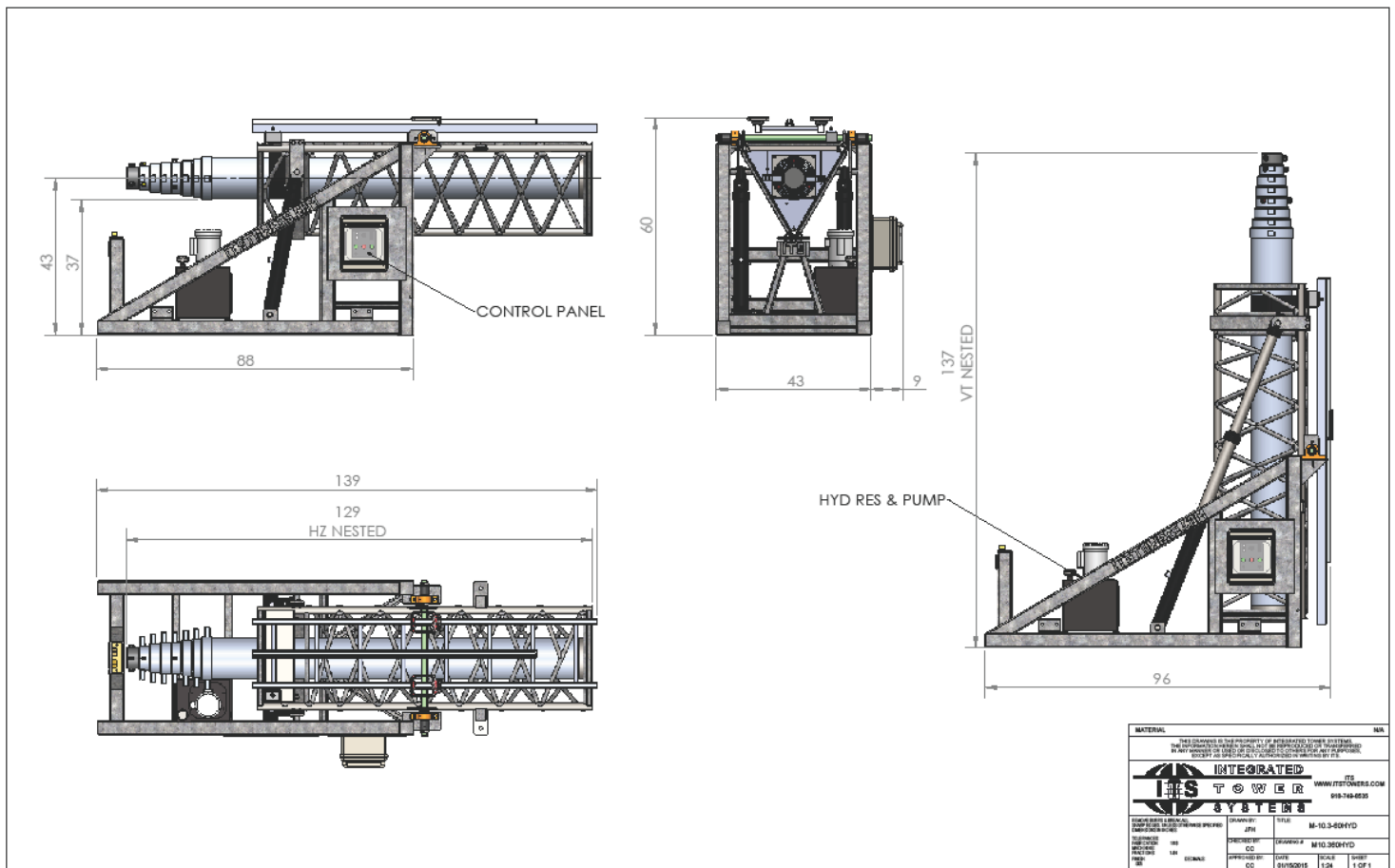
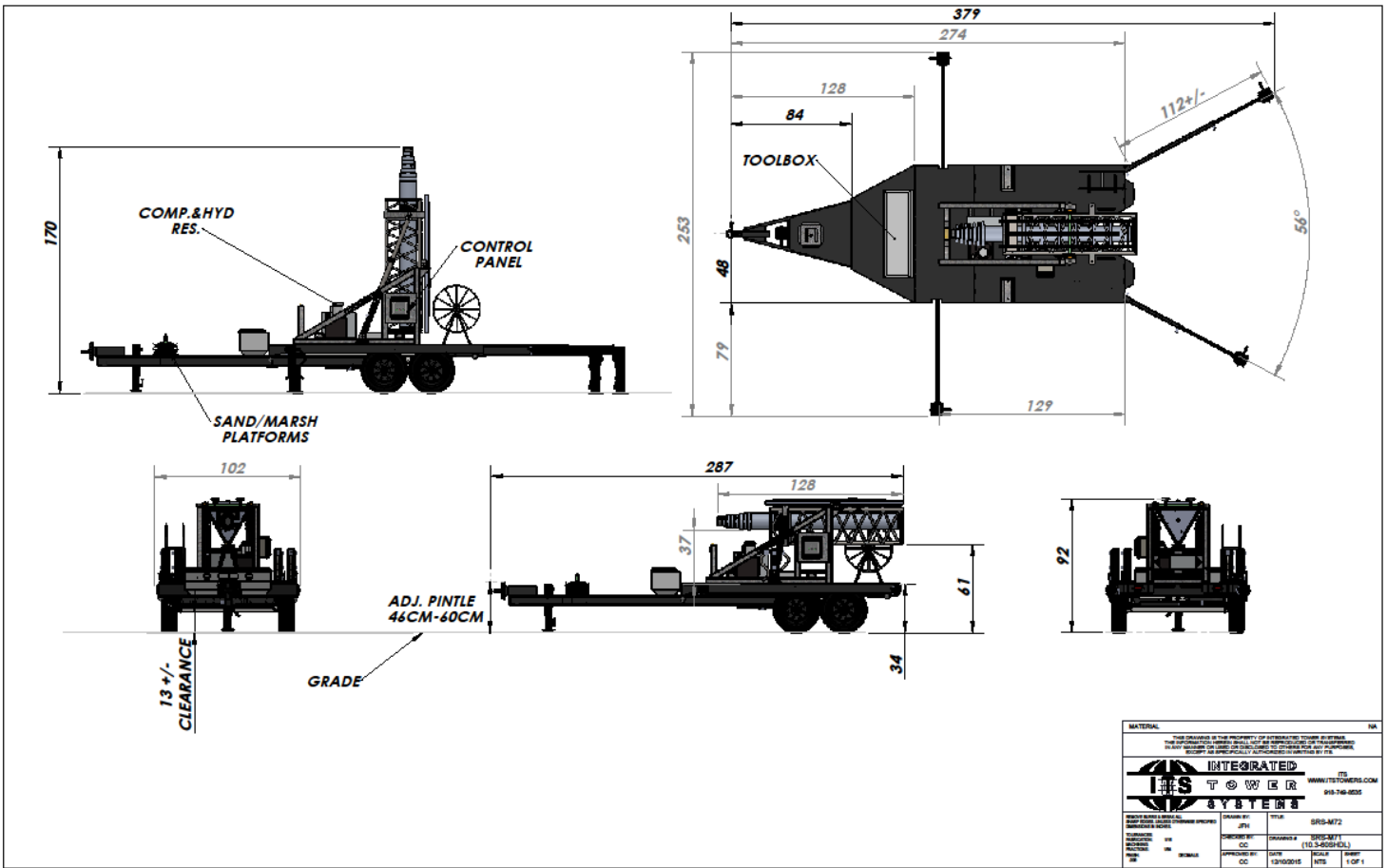
(Shown with Optional Features/Accessories)

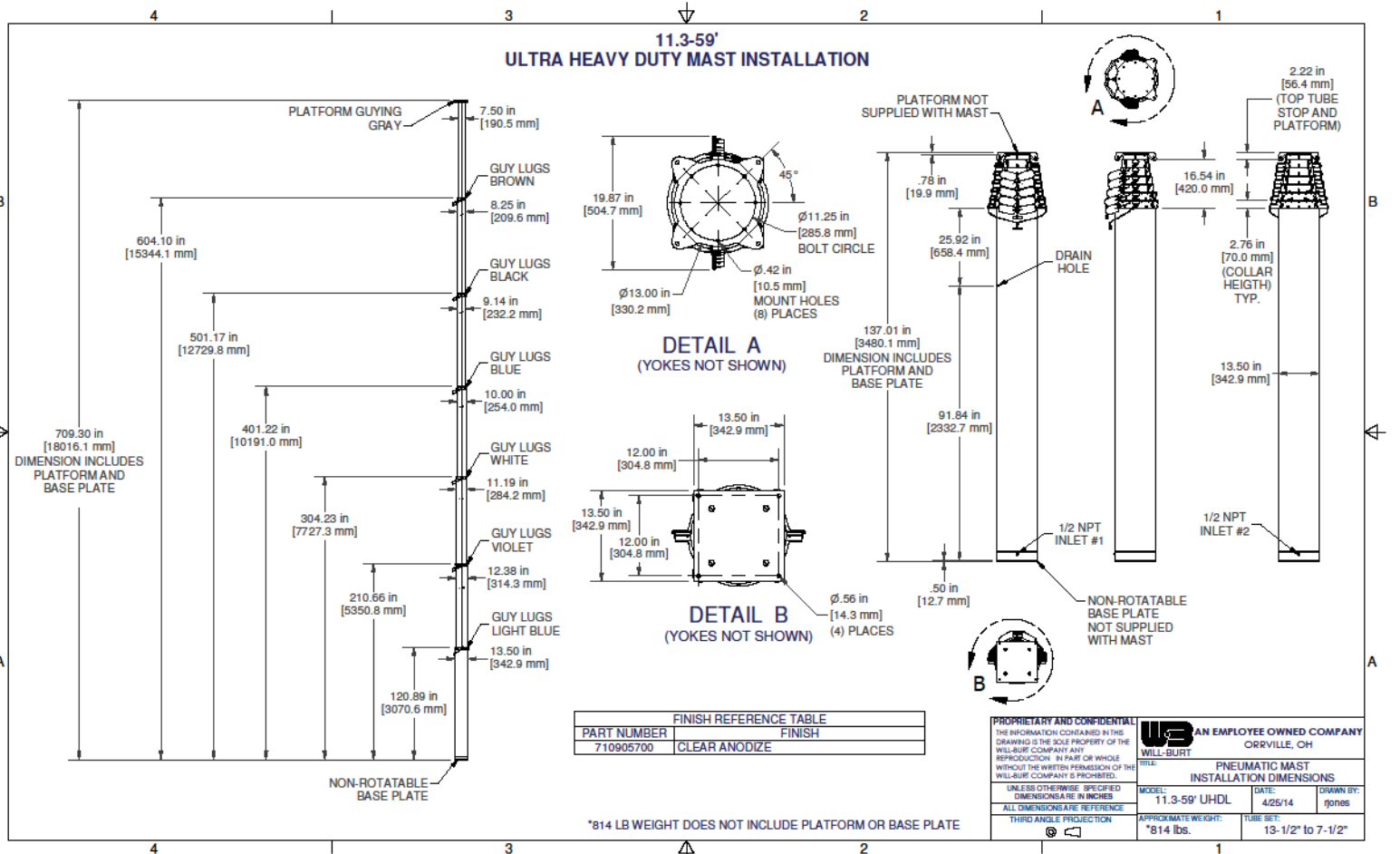
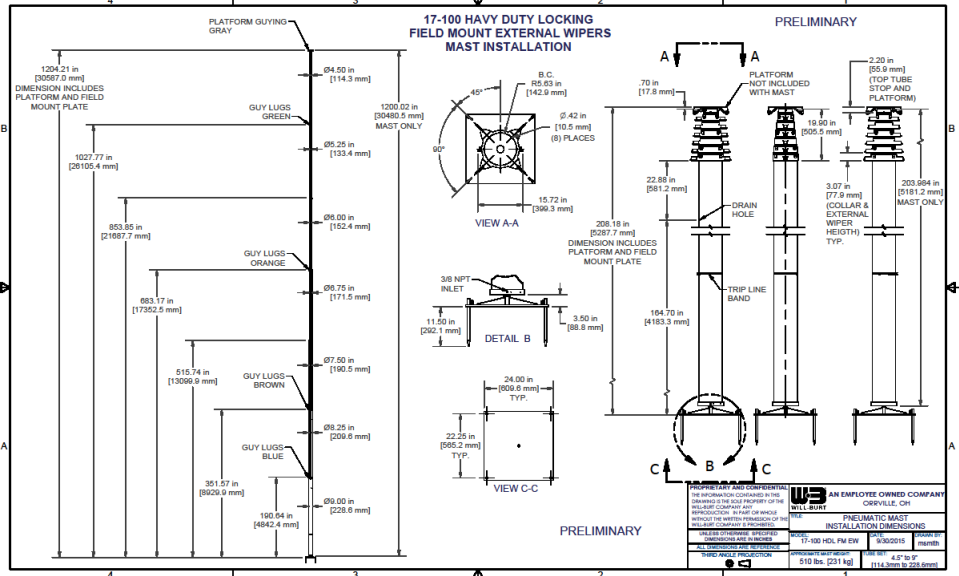
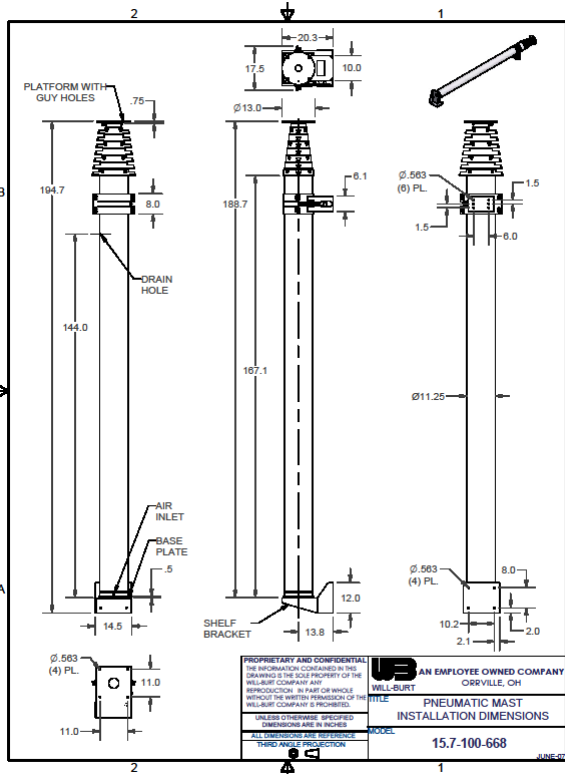


REPRESENTATIVE SRS-M SERIES MOBILE MAST (Hydraulic Tilt Assembly / 100' (30m) Mast)



REPRESENTATIVE SRS-M SERIES MOBILE MAST
 (Hydraulic Tilt Assembly / 60' (18m) Mast)





FINISH REFERENCE TABLE	
PART NUMBER	FINISH
710905700	CLEAR ANODIZE

*814 LB WEIGHT DOES NOT INCLUDE PLATFORM OR BASE PLATE